

FOLDING CLOSURES } ROLLER GRILLES } ROLLER SHUTTERS

19mm High Tensile Aluminium Roller Grille



A heavy duty roller grille door designed specifically for the larger openings experienced in Shopping Malls, Supermarkets, Cart docks & Arcades as well as a specialised door for carparks.

With several manual and motor options, this product combines airflow & high levels of visibility without loss of security



HEADROOM		SIDEROOM A	SIDEROOM B	PROJECTION
Manual	Varies according to height of opening	100	100	400
SCI Motor		100	150	650
HCI Motor		100	280	500

SPECIFICATIONS

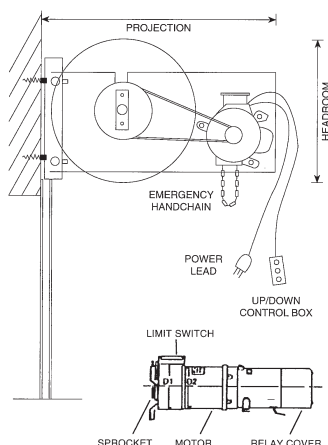
Curtain: Horizontal 19mm aluminium tubes spaced 50mm apart by high tensile aluminium joining links to form a strong brickwork pattern. Nylon endcaps reduce friction inside the door guides. A bottom rail attached to the bottom of door screen is manufactured from extruded aluminium RHS. Manual doors are fitted with a 2 way doublesided deadlock.

Guides: Extruded heavy duty aluminium captive guide channel 50mm wide x 50mm deep, fixed conventionally behind door jambs or recessed into wall. Flared at top for smooth entry of screen into guides. The guide profile incorporates a mohair strip each side of cavity to reduce wear on door screen making quieter operation and extending the life of the door. Captive profile prevents screen from being forced out of the guides.

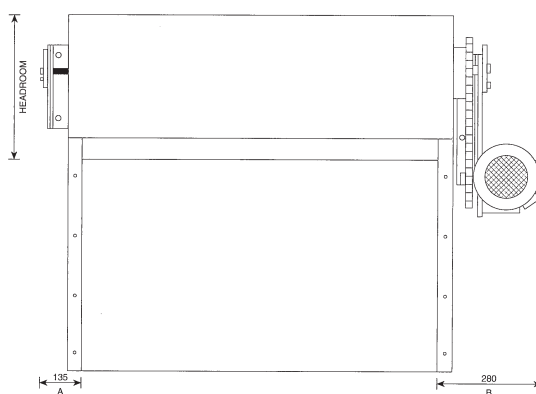
Barrel: 150mm diameter door drum for minimal deflection of door screen across opening. Torsion springs calculated to balance screen weight for lightweight operation. Axle fitted with sealed roller bearings for high cycle operation. Door brackets adjustable to suit varying roll sizes, fitted conventionally to jambs above door opening.

Mullions: Removable mullions are used to separate multiple doors in cases of very wide or angled openings when full access is required. The door tracks being removable leaving opening unobstructed.

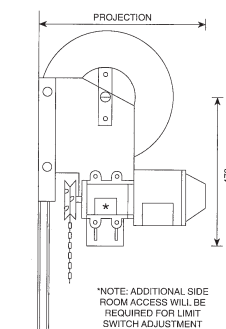
Standard Finish: Satin Silver Anodised Aluminium. Powder coating of a wide range of colours available as an optional extra.



**Standard Motorising - SDI
(shopfronts)**



**High Cycle Motorising - SDI
(carparks)**



Operation: Spring balanced, manual chain hoist or motorised options available.

Spring balance: Computer generated spring formula ensures fingertip manual operation.

Standard Motorising - SDI: A pre-wired single phase 1/2hp motor/gearbox drive unit with pre-wired pushbutton controller, power lead & built - in adjustable limit switches. Unit fitted with emergency handchain for operation in case of power failure. Extras include UPS Battery Backup & External Keyswitch.

High Cycle Motorising - HC I: A 1hp high cycle fan cooled motor/gearbox drive unit with built- in limit switches in 1 phase or 3 phase options. Auxiliary hand chain for use in case of power failure. Designed specifically for carparks. Controller options range from simple push button operators to the fully automatic logic controllers with security system interphase. Please contact our sales office with your specific requirements. HC I operators and motor units do not come pre-wired. This work to be carried out by separate electrical contractor.

Scotty Doors Ltd has a continuing programme of product development and reserves the right to alter specifications at any time without notice. A full range of extra details available at www.scottydoors.com

Distributed by:

Manufactured by:

Scotty Doors
ROLLER GRILLES & SHUTTERS

37 Forge Road, Silverdale, Auckland
P. O. Box 264, Silverdale, Auckland, New Zealand
Phone: 0942 63899 Fax: 0942 63988
Email: scotty.doors@xtra.co.nz www.scottydoors.com