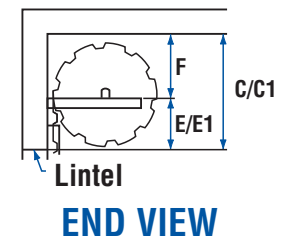
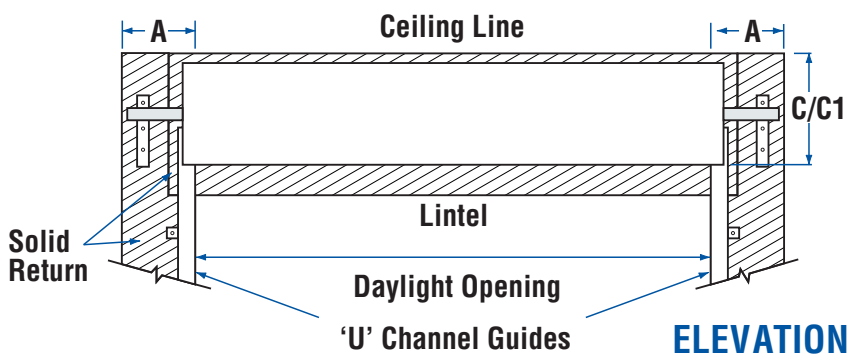
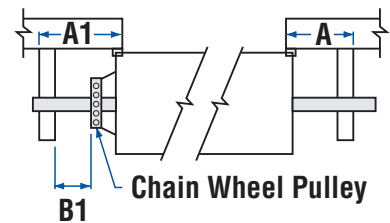
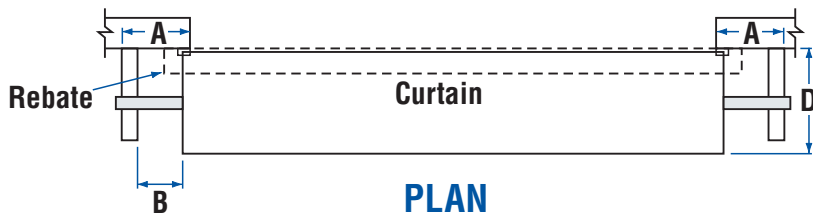


S3 Roll-A-Door Framing Instructions

For Series 3 Roller Doors Up To 3.30m High

Note: With ongoing product developments, the manufacturer retains the right to change products & specifications without notification. If a specification is critical to the end use, please discuss with your Local Dealer first. Illustrations are not accurate representations of product, and are for illustrative purposes only, not to scale. All measurements should be made by your Local Dealer for clarification.



REBATE DETAIL - STD GUIDES
100mm Past Opening
120mm Inside Building

DIMENSIONS

A1* Denotes sideroom/fixings required for installation of an opener when mounted on the door bracket. (Garador Openers only)

B Denotes non geared end of curtain

B1 Denotes geared end of curtain

C1 & E1 Denotes restricted headroom installation requirements

C & E Is recommended.

Fixing (shown shaded) must be solid timber, masonry or steel. All masonry must be solid bricks or core filled. Steel must be of a suitable thickness. If unsure consult with your engineer.

All measurements are in millimetres and are minimum unless otherwise shown.

HEIGHT	A	A1	A1*	B	B1	C	C1	D	E	E1	F	OPERATION
UP TO 2400	135	135	235	35	N/A	540	475	555	245	180	295	Hand Operated
2401 - 3300	195	225	235	35	5	620	555	565	310	245	310	Direct Drive

Note: Installations with only minimal clearances may incur additional costs. Consult your Dealer.