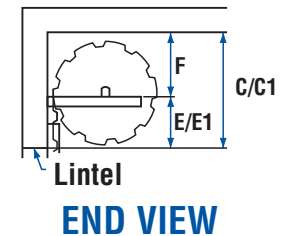
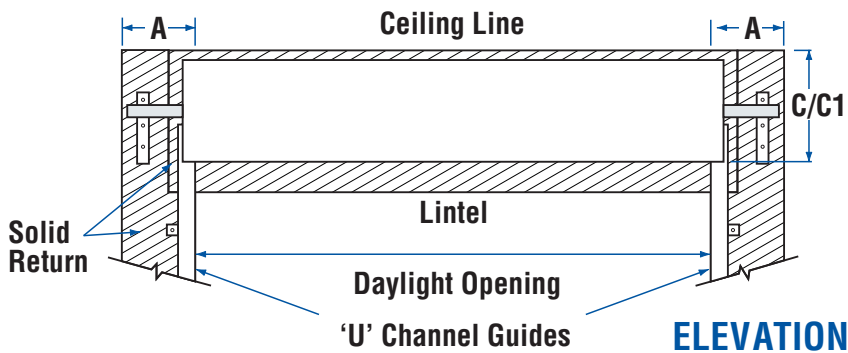
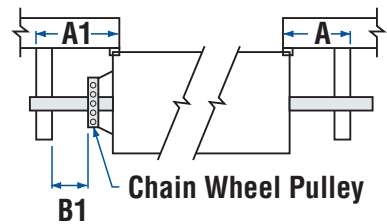
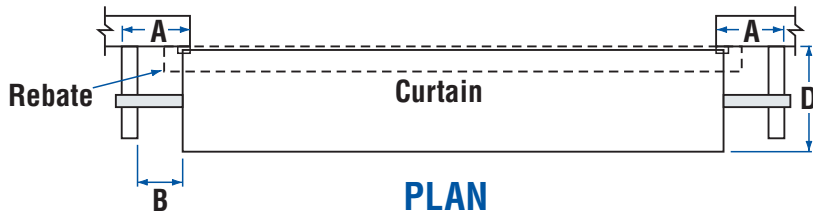


S2 Roll-A-Door Framing Instructions

For Series 2 Roller Doors Up To 5.00m High

Note: With ongoing product developments, the manufacturer retains the right to change products & specifications without notification. If a specification is critical to the end use, please discuss with your Local Dealer first. Illustrations are not accurate representations of product, and are for illustrative purposes only, not to scale. All measurements should be made by your Local Dealer for clarification.



REBATE DETAIL - STD GUIDES
100mm Past Opening
120mm Inside Building

Fixing (shown shaded) must be solid timber, masonry or steel. All masonry must be solid bricks or core filled. Steel must be of a suitable thickness. If unsure consult with your engineer.

Note: Series-2 doors have a minimum 50mm curtain overlap on both sides. Wind-Locked doors will need between 55 - 68mm curtain overlap on both sides (depending on the substrate used). **Wind-Locked doors require a minimum of 165mm sideroom timber** to allow for fixing of the track. – Please refer to windlock certification drawing for full specification requirements.

DIMENSIONS

- A1*** Denotes sideroom/fixings required for installation of a Garador opener when mounted on the door bracket.
- B** Denotes non geared end of curtain
- B1** Denotes geared end of curtain
- C1 & E1** Denotes restricted headroom installation requirements
- C & E** Is recommended.

All measurements are in millimetres and are minimum unless otherwise shown.

| HEIGHT | A | A1 | A1* | B | B1 | C | C1 | D | E | E1 | F | OPERATION |
|-------------|-----|-----|-----|----|-----|-----|-----|-----|-----|-----|-----|----------------|
| UP TO 2400 | 135 | 135 | 235 | 35 | N/A | 540 | 475 | 555 | 245 | 180 | 295 | Hand Operated |
| 2401 - 2700 | 135 | 135 | 235 | 35 | 5 | 620 | 555 | 565 | 310 | 245 | 310 | Direct Drive |
| 2701 - 3000 | 180 | 205 | 235 | 35 | 5 | 620 | 555 | 565 | 310 | 245 | 310 | Direct Drive |
| 3001 - 3300 | 195 | 225 | 235 | 35 | 5 | 620 | 555 | 565 | 310 | 245 | 310 | Planetary Gear |
| 3301 - 4200 | 195 | 225 | 235 | 35 | 5 | 620 | 555 | 585 | 310 | 245 | 310 | Planetary Gear |
| 4201 - 5000 | 210 | 225 | 235 | 35 | 5 | 635 | 590 | 615 | 310 | 245 | 325 | Planetary Gear |

Note: Installations with only minimal clearances may incur additional costs. Consult your Dealer.

0800 427 236
www.garador.co.nz

Contact: