



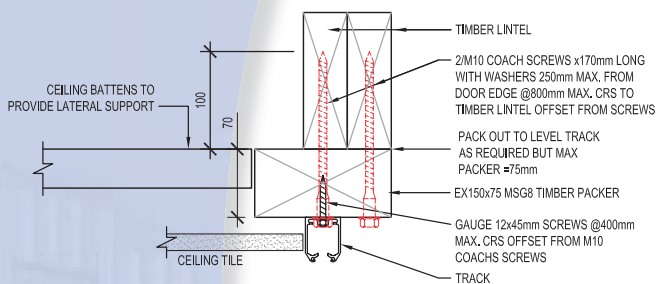
FOLDING CLOSURES } ROLLER GRILLES } ROLLER SHUTTERS

## Mangawhai Folding Closure

The "Mangawhai" model is part of our exciting collection of folding closures – designed and manufactured in New Zealand with a uniquely kiwi theme, incorporating 'The Wave' panel – an extrusion inspired by the cool, pure waters of our country. The Mangawhai folding closure eliminates the need for complicated bulkheads and costly motors, they require no headroom and can span large openings without the need for heavy mullions. The folding closure is suitable for a wide range of internal and external applications such as shop fronts, cafes, receptions and bars and just about anywhere you may wish to restrict access.



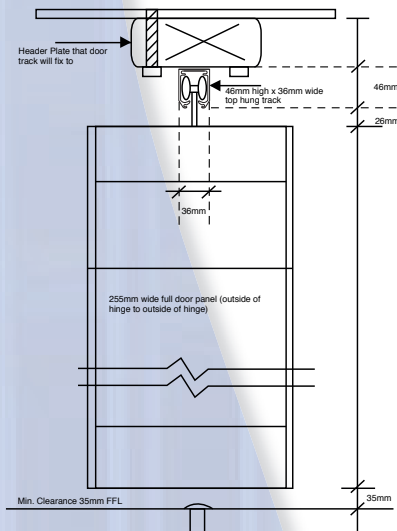
## SOLID FIXING OPTION



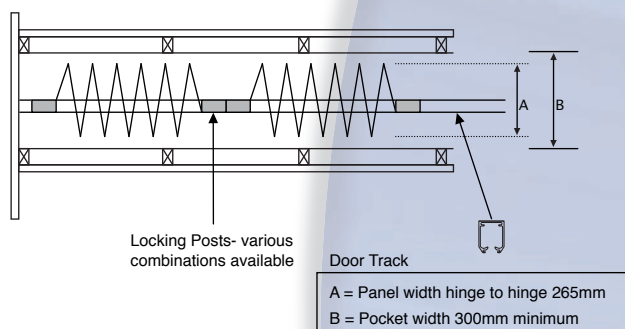
## FIXING DETAIL TO TIMBER

1:5@A4

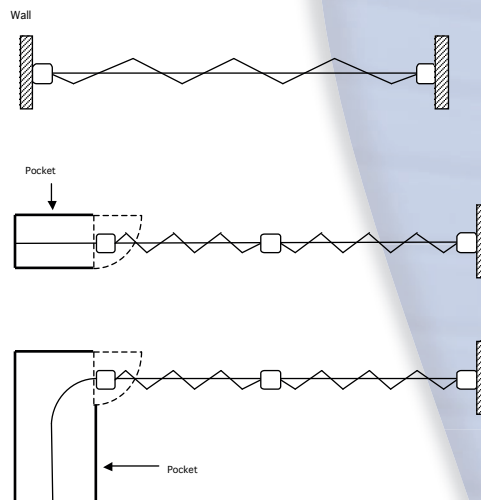
## VERTICAL SECTION



## POCKET REQUIREMENTS



## LAYOUT OPTIONS



## SPECIFICATIONS

**Curtain:** Mangawhai - integrates our exclusive 205mm wide 'Wave' aluminium header and footer sections, between a New Zealand designed and manufactured inter-locking single piece Aluminium hinge system. The Mangawhai is glazed with 2mm Impact Strength Polycarbonate panels - reinforced with our proprietary nylon fixing profile.

**Locking Posts:** All Mangawhai folding closures are secured by 35mm wide x 70mm deep extruded vertical locking posts. Main locking posts have a top & bottom mechanically retractable locking system, intermediate posts have bottom locking pins and bi-part posts are available with latch locking systems for easy egress where needed.

**Guides:** Extruded Aluminium channel 25mm wide x 50mm deep, fixed conventionally behind door jams or recessed into wall. Flared at top for smooth entry at screen.

**Overhead Track:** Extruded Aluminum, 46mm high x 36mm wide, with continuous extruded profile seamed together by Alignment Bars and Track Pins. Standard and custom curves are available to suit all needs.

Schlage Euro cylinders and escutcheons are used for security and looks.

Maximum recommended height: 4000mm

Scotty Doors Ltd has a continuing programme of product development and reserves the right to alter specificatiuons at any time without notice. A full range of extra details available at [www.scottydoors.com](http://www.scottydoors.com)

**Distributed by:**

**Manufactured by:**

6 Atlas Place,  
Mairangi Bay,  
North Shore City,  
Auckland, New Zealand  
P O Box 305041, Triton Plaza, North Shore City 0757,  
Auckland, New Zealand  
Phone: 0800 760 687 or +64 9 479 4779  
Fax: +64 9 479 4771  
Email: [www.scottydoors.com](http://www.scottydoors.com)

