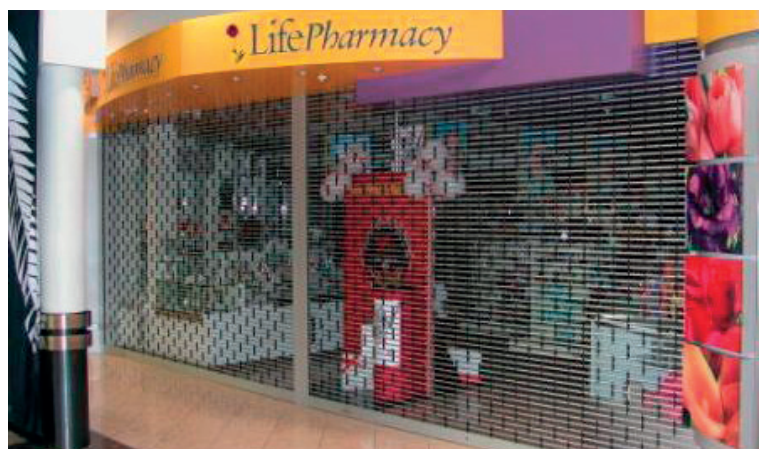


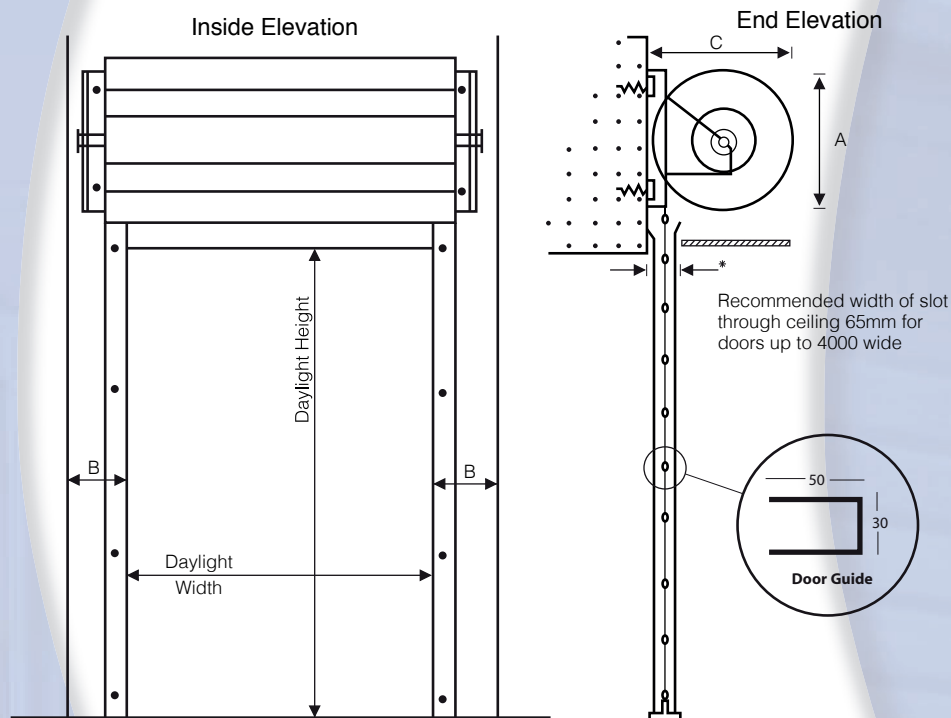


FOLDING CLOSURES } ROLLER GRILLES } ROLLER SHUTTERS

12mm Aluminium Roller Grille

For all areas where security, high levels of visibility or airflow, combined with an attractive appearance are required. This mesh roller grille for many years, has provided a practical solution for a number of different security problems. Roller Grilles may be applied to almost any type of existing or new openings with a degree of concealment not available in any other type of product. Suitable applications include: shopfronts, malls, arcades, bar and reception counters & closing off areas to public access. Door sizes are made to order and are not limited to standard sizes.





	HEADROOM A	SIDEROOM B	PROJECTION C
Doors up to 3000mm spring balanced	400	100	400
Motorised	400	150	650
Mullions - refer to data sheets			

SPECIFICATIONS

Curtain: Horizontal 12.7mm aluminium tubes connected by Nylon links into a brickwork pattern. Screen rigidity is increased by incorporating 3 tubes per row of Links, Nylon end caps prevent metal on metal contact in door tracks, thus making operation quieter and extend the life of the door.

Bottom Rail: Extruded Aluminium Section concealing 2 way double sided deadlock and allowing keyed access from either side. Locking can be positioned off centre if requested to avoid obstructing tills, posts etc.

Guides: Extruded Aluminium channel 25mm wide x 50mm deep, fixed conventionally behind door jambs or recessed into wall. Flared at top for smooth entry at screen.

Barrel: 200mm diameter door drum for minimal deflection of door screen across opening. Torsion springs calculated to balance screen weight for lightweight operation.

Motorising: Several options available in single or 3 phase models. Additional clearances required, refer to separate data sheets. Optional extras include UPS Battery Backup (single phase), External Keyswitch & Remote Control.

Mullions: Removable mullions are used to separate multiple doors in cases of very wide or angled openings when full access is required. The door tracks being removable leaving opening unobstructed.

Standard Finish: Satin Silver Anodised Aluminium. Powder coating of a wide range of colours available as an optional extra. Maximum recommended size for manual doors is 4000 wide x 3000 high. Contact us for recommendations over this size.

Scotty Doors Ltd has a continuing programme of product development and reserves the right to alter specifications at any time without notice. A full range of extra details available at www.scottydoors.com

Distributed by:

Manufactured by:

6 Atlas Place,
Mairangi Bay,
North Shore City,
Auckland, New Zealand
P O Box 305041, Triton Plaza, North Shore City 0757,
Auckland, New Zealand
Phone: 0800 760 687 or +64 9 479 4779
Fax: +64 9 479 4771
Email: www.scottydoors.com

